

Onboarding Booklet For Visiting Students



Autumn semester – 2021/2022 academic year

Contents

Welcome	3
2021/2022 autumn semester – Onboarding	4
Contact Corvinus	5
Contact details	5
Contacting your coordinator	6
Email queries	6
Don't miss the latest news	7
Schedule of the Academic year of 2021/2022	8
IT Systems and Programs	8
CUSMAN	9
NEPTUN	11
MOODLE	12
MICROSOFT TEAMS	13
OFFICE 365, OUTLOOK	14
MYCORVINUS APP	15
Other	15
Entering Hungary, visa	16
Police equity request form	16
Things to be taken care of after arriving in Budapest	17
Covid-19 Information	18
Campus Information	19
Buildings of the Budapest campus	19
Cafeteria	20
Copy shop	20
Preliminary course registration	21
Course structure	21
Class schedule of Corvinus	22
Class schedule	22
Fees and payments	22
Health insurance	23
Chronic Illnesses, Regular Medication	23
Library	24
Student Organizations	24
Student Council (HÖK)	24
Sport and Health	25
Student Support Services	25
Corvinus International Blog	26
Life in Budapest	26
Discover the City	26
Cost of Living	27
Districts of Budapest	28
Public Transport	28
Accommodation	30
Useful Tips and Information	30
Discover Hungary	31

Welcome

3

Dear Student,

Congratulations on your successful application and welcome to Corvinus University of Budapest!

This Guide aims to ensure that you have available all the information needed to enable you to prepare for the semester smoothly through the preliminary course registration and onboarding process.

Please, read the contents of this booklet carefully (and keep it in mind as a possible reference guide) as it contains information that you will find useful not only now, but also later on. We strongly recommend that you save in your calendar the dates and deadlines of the most important administrative requirements and events to ensure that you do not forget to meet these.

We will keep you updated on the upcoming administrative and academic requirements via e-mails, so please check your mailbox frequently (including the Spam folder).

Below please find the quick links to our more detailed guides:

Practical guide (exchanging money, booking a taxi, emergency numbers, shopping, sports... etc.)

Housing guide (If you need to arrange your accommodation individually -accommodation options, renting in Budapest, how to avoid scams...etc)

We wish you a successful semester!

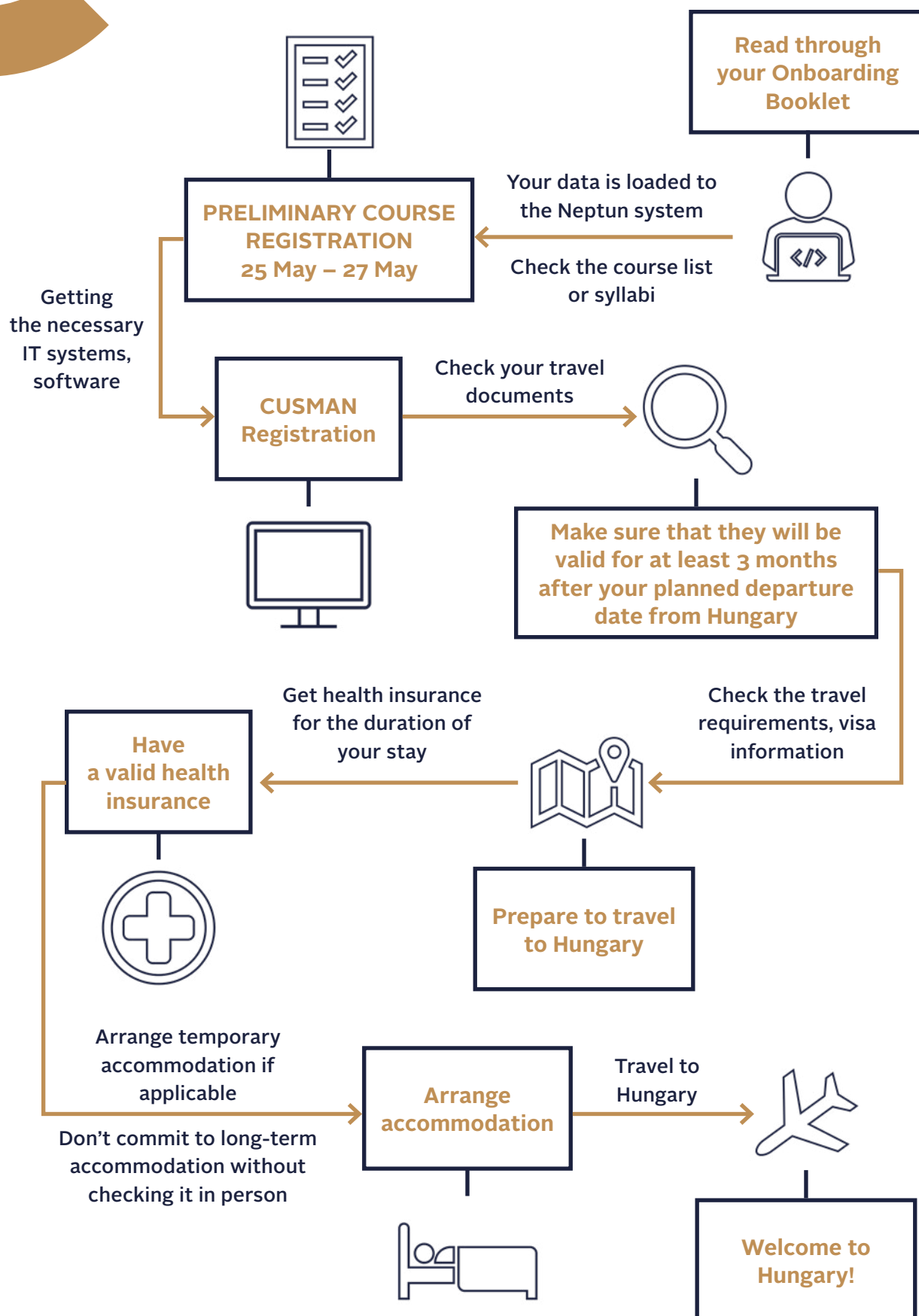
Best regards,

Student Services



CORVINUS UNIVERSITY OF BUDAPEST

2021/2022 autumn semester – Onboarding





Contact Corvinus

CONTACT DETAILS

Once you have set up your CUSMAN login, you will receive an official ...@stud.uni-corvinus.hu student email address. When this is available, you must use this to contact anyone within Corvinus University (your coordinator, your professors, etc.). This is required in the case of all students studying at Corvinus due to identification and GDPR reasons. E-mails coming from non-uni-corvinus.hu e-mail addresses are usually not responded to once the semester has started.

Field	Whom to contact	Topics
Study Program	corvinus.studyabroad@uni-corvinus.hu	<ul style="list-style-type: none">▶ Issues regarding the semester abroad at Corvinus▶ Study related issues▶ Questions related to visa, residence permit, accommodation▶ I don't know whom to turn to with a problem
Neptun System	neptun@uni-corvinus.hu	<ul style="list-style-type: none">▶ I can't log in to Neptun
Moodle System	moodlehelpdesk@uni-corvinus.hu	<ul style="list-style-type: none">▶ I can't log in to Moodle
IT Problem	helpdesk@uni-corvinus.hu	<ul style="list-style-type: none">▶ Cusman login and password issues▶ Microsoft Office365, Teams, Outlook related problems▶ Wifi, VPN problems▶ IT security
MyCorvinus App	MyCorvinus@uni-corvinus.hu	<ul style="list-style-type: none">▶ I can't log in to the app▶ Feedback regarding the app (suggestions for improvement, comments)

Field	Whom to contact	Topics
Library	library@uni-corvinus.hu	<ul style="list-style-type: none"> ▶ Registration for loaning out books (i.e. getting the library card) ▶ Services ▶ Accessing the databases
Mental Health	pszichologus@uni-corvinus.hu	<ul style="list-style-type: none"> ▶ Intercultural issues ▶ Anxiety, stress ▶ Family and relationship conflicts ▶ Loss, grief
Disability	disability@uni-corvinus.hu	<ul style="list-style-type: none"> ▶ Support for students with special needs
Learning Support	learningsupport@uni-corvinus.hu	<ul style="list-style-type: none"> ▶ Learning strategies ▶ Exam stress ▶ Performance anxiety
COVID-19 Info	coronavirusinfo@uni-corvinus.hu	<ul style="list-style-type: none"> ▶ Reporting coronavirus infection (once arrived in Hungary) ▶ Questions regarding coronavirus restrictions

CONTACTING YOUR COORDINATOR

Due to the Coronavirus situation the best way of contacting your coordinator is rapidly changing. Prior to arrival, the most effective way is via email. For up to date information please check the [website](#) or ask your program coordinator.

EMAIL QUERIES

After having set up your CUSMAN account and receiving your official ...@stud.uni-corvinus.hu student email address, always use this when contacting university staff. **From the beginning of the semester onwards, emails coming from student's private email addresses will not be responded to due to GDPR rules and university regulations.**

Keeping to the following guidelines will make your email communication smoother, more effective and even more enjoyable:

7

- ▶ Use an “official” format and style
 - Start your email with a salutation (Dear ...)
 - Summarize your issue in a precise, understandable way
 - Provide all supporting information that may assist the coordinator help solve your problem faster (attach documents, screenshots)
 - Close your email with Regards, Best regards
 - Sign your email with your **full official name and Neptun code**
- ▶ When continuing an already started **discussion on a given topic, please use the “reply / reply all” option instead of starting a new email.** This will help the coordinator(s) recap the situation and problem and the stage reached in solving it
- ▶ Treat all university staff with courtesy and respect
- ▶ Please wait at least 2 working days before sending a reminder
 - Coordinators are dealing with a large amount of queries. Sending reminders will only slow down the process
- ▶ Do not leave problems and important questions till the very last moment, allow sufficient time for the issues to be sorted out

Don't miss the latest news

You can find the latest news about the university [on the website](#), in the newsletter and in the MyCorvinus application ([iOS](#) or [Android](#)). You should also check out the following social media platforms:

[Facebook](#)

[LinkedIn](#)

[Youtube](#)

[Instagram](#)

While the different social media platforms are a good way to collect information, please use the official university addresses in case of direct communication regarding your university studies, administrative matters.

Schedule of the Academic year of 2021/2022

You can download the detailed schedule of the academic year from [here](#) or you can check it out on our [website \("for guest student"\)](#).

To have a quick overview of upcoming events or recent news, you may wish to check out the [International Blog](#).

IT Systems and Programs

The use of different IT programs and resources is essential in today's world. **Please make sure that you install all the necessary software and applications** in order to start and complete your semester successfully.

Login/usernames and passwords:

Do not forget to note down and know your login details. Make sure to have it in hardcopy (i.e. on paper). Others' experience has already shown that phones and laptops can be lost or can break down at the worst possible moments. It is never a good idea to share your login details and passwords. If you require detailed help on how to use these programs, please check out YouTube as there are many tutorials available in English online.

Please be aware that **without these programs, you won't be able to complete your semester successfully.**

The CUSMAN program gives you access to the university IT network, moreover, it allows you to use the same login details on the different electronic Corvinus platforms.

When?

Please complete your CUSMAN registration after you have received your Neptun code. Please note: You cannot start the registration process without your Neptun code, which will be sent out to you as soon as possible.

Why is this important?

Apart from **giving you access to all the restricted sites** of the Corvinus website (e.g. course descriptions, etc.), your official Corvinus **student email address is generated** in the frame of the CUSMAN registration process. This is vital as throughout your studies at Corvinus your official university email address (**xxx@stud.uni-corvinus.hu**) will be the only channel you can use to communicate with Corvinus staff members and professors. In accordance with the GDPR rules and university regulations, **your official Corvinus student email address is the only official channel through which the Corvinus University will communicate with you.**

You will also need your CUSMAN login details to **sign into the Microsoft Teams platform** which will accommodate not only your classes but will also be the platform for important online events and programs, too. You will keep in touch with your teachers and fellow students on Teams, so you must have access to this platform. Please note, that **communication with the Student Services staff members is not possible via the Teams platform.** All communication with the Student Services staff members must take place via e-mail.

You can change your password or check your official Corvinus university email address on the CUSMAN site.

You will need your CUSMAN login details to sign into the **University's Wi-Fi system**, too.

Where?

You can log in to the CUSMAN system [here](#). When you first sign in, please change your password. Once you proceeded with the password change that automatically indicates your successful CUSMAN registration.

How?

CUSMAN ID: xxxxxx (= your Neptun ID in lower case)

CUSMAN password: has to be set by you – Please follow the below steps to set your password:

- ▶ Go to [CUSMAN](#)
- ▶ Accept the "AUP" and the terms and conditions of usage by putting a tick.
- ▶ Log in with your Neptun ID (all characters should be lower case!)
- ▶ Add your date of birth without separating characters (YYYYMMDD)
- ▶ When you have successfully logged in, the system will ask you to set a new password – we suggest that you use the same password you set for Neptun earlier, so you have the same password both for Neptun and for your "CUSMAN" accounts.
 - By logging in to the main page of CUSMAN,
 - your *CUSMAN password* and
- ▶ your official *Corvinus e-mail address* will be generated.
- ▶ Save your Corvinus e-mail address from the front page!
(all communication from the administrative staff will be sent to this)

If you forget your CUSMAN password or if you have any technical difficulty accessing Moodle or Office 365, you will need to contact helpdesk@uni-corvinus.hu.

How to access your official Corvinus student e-mail address:

- ▶ Click on "[E-MAIL LOGIN](#)"
- ▶ Enter your Corvinus e-mail address > click on "Next"/"Tovább"
- ▶ Enter your Cusman password > Sign in (we suggest that you stay logged-in).

Neptun is the unified student and educational database system of the Corvinus University. You have to use this site to manage the majority of your administrative duties such as enrol as an active student for the semester during Orientation Week, prior to the final course registration period, check that you are registered for the courses that you really will be taking, fulfil your financial obligations, submit requests, register for exams, double check your final grades at the end of the semester (which are mandatorily registered in Neptun).

When?

Please, always be aware of the administrative obligations and deadlines you need to fulfil during your studies in order to avoid any problems or late administrative fees. In case of important matters further information will be provided by your coordinator however please check frequently the Corvinus [website for the latest news](#).

Why is this important?

Fulfilling your administrative requirements is an integral part of the completion of your studies.

Where?

You can log in the Neptun system [here](#). You can switch the language of the site by clicking on the British flag.

How?

You can log into the Neptun system with your unique Neptun identifier (6-digit code) and your password (your coordinator will inform you about your first password). If you experience any difficulties in logging into the system (other than a password problem), please contact neptun@uni-corvinus.hu.

You will be informed of your Neptun code as soon as possible, but definitely before the official preliminary course registration period.

Should you forget your Neptun password, please send an e-mail to your coordinator. It will be reset and your new password for logging in will be sent to you (you will be able to change the password after logging in).

MOODLE

Moodle is the e-learning management system used by Corvinus University. This is the online Learning Platform / Course Management System that most professors use to share course materials with the students.

When?

You will be able to log into the Moodle system after you have registered in CUSMAN, as you will need to use the same login details. Please note that the Moodle platform will be activated around the start of the orientation period, therefore you won't be able to use it earlier.

Why is this important?

The majority of your professors will use Moodle throughout the semester. **Updated course syllabi, lecture slides, training materials, presentations, assignments, etc. are usually uploaded on Moodle. You may also be asked to upload written assignments, group projects there, as well.**

Moodle can also be used as an online testing platform (quizzes, midterms, end-of-the-semester exams).

Please be aware: Professors can check Moodle to see how many times you have accessed the course site, whether you have checked out the additional course materials uploaded, and they can also run any uploaded assignments through Urkund (the plagiarism checker connected to Moodle and used by Corvinus professors), etc.

Where?

You can log into the Moodle system [here](#). You can switch the language of the site in the upper right corner of the page.

How?

You can log into the Moodle system with your CUSMAN login details. If you experience any difficulties when logging into the system, please contact moodlehelpdesk@uni-corvinus.hu.



MICROSOFT TEAMS

13

Microsoft Teams is the communication and collaboration platform used by the Corvinus University. You will be able to keep in touch with your teachers and fellow students here, and this program will accommodate all online events, as well as any online classes.

Please note that you should communicate with the Student Services staff only via email.

When?

We suggest that you download the app to your desktop/laptop/phone as soon as possible, to ensure that it will be already available when you need to use it.

Why is this important?

You can join lectures, seminars and various events organized by the university through Teams.

Where?

Please note that Microsoft Teams is also accessible from the web. You can use this version when you want to join an event quickly. However, for your studies, we suggest you to download the application both to your preferred electronic device (desktop, laptop...etc) and your phone too.

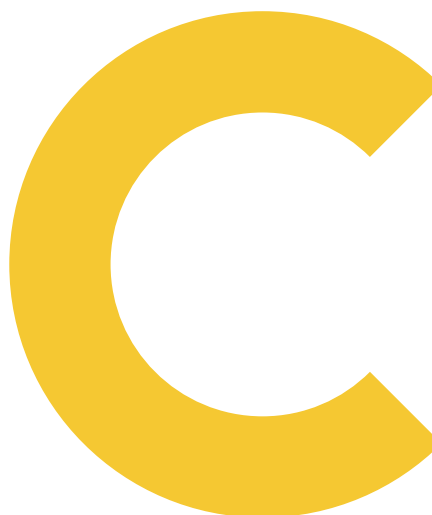
Teams can be accessed on the web [here](#).

You can download the application from [here](#).

How?

You can log into Teams by using your university email address (...@stud.uni-corvinus.hu) and your CUSMAN password. If you need any assistance, please contact the following email address:

helpdesk@uni-corvinus.hu



OFFICE 365, OUTLOOK

The Office 365 is the Microsoft package used by the Corvinus University. It is available free of charge for all officially enrolled students.

You will be able to use the programs through the web or via downloaded application. We strongly recommend that you to **install the Outlook app to your phone and turn on the notification**, so you will be informed about every important news, tasks, changes related to your studies.

When?

You will be able to access the Office 365 package at any time once you have set up your CUSMAN.

We strongly advise that you download the Outlook app to your phone once you have registered in CUSMAN. If you can't log in to your email right after the registration process, please be patient as it might take a bit of time.

Why is this important?

The Office 365 package includes all the essential programs you will need throughout your studies at Corvinus University: e.g., preparing presentations, calculations, or essays (Word, Excel, Power Point... etc). By using the OneDrive cloud-based service, you will be able to share files or edit them together with other students.

The university's chosen mailing system is Outlook. **Due to identification and GDPR reasons, you will receive all communication from Corvinus to your student email address (xxx@stud.uni-corvinus.hu), and you will only receive answer to your emails if you are using the above-mentioned address.** The importance of Microsoft Teams has been discussed earlier.

Where?

You can download the Office365 software from [here](#).

How?

You can use Outlook and the other Office 365 programs by using your official Corvinus student email address (...@stud.uni-corvinus.hu) and CUSMAN password. Should you have any login issues, please contact helpdesk@uni-corvinus.hu.

Guides on how to use it are available [here](#).

MYCORVINUS APP

The MyCorvinus app is the university's mobile application where you will find the most important information related to your studies, e.g. your timetable, grades or the opening hours of the library. It can also assist you in finding the location of a specific room or classroom in any of the Corvinus campus buildings.

When?

While the MyCorvinus app is not essential from the point of view of your studies, it will make your life at Corvinus and getting around the Campus so much easier!

Why is this important?

With the help of MyCorvinus app you will be able to access all necessary study related information within a few clicks. It also has a built-in map which helps you to navigate in and between the university buildings.

Where?

You can download it from [AppStore](#) and [Google Play](#).

How?

After downloading the MyCorvinus app you can log in with your CUSMAN details.

You can find more information about the app's features in the following [video](#).

OTHER

There are also several other IT services available for the students of the Corvinus University. Please check them out and take advantage of the possibilities [here](#) as needed.

Entering Hungary, visa

The rules and regulations on entering Hungary vary depending on your citizenship and place of residence. Please check the relevant information prepared for you carefully to ensure that you will be able to enter Hungary without any difficulties.

You can download our guide on Entering Hungary from [here](#).

You can find useful information on the whole process [here](#).

To find daily updated information on the status of the Coronavirus pandemic situation in Hungary, please check the official [website](#) of the Hungarian Government.

POLICE EQUITY REQUEST FORM

At the time this booklet is being prepared, a [Police Equity](#) approval is required for all foreign nationals to enter Hungary. If this regulation continues to be in effect at the time you plan to arrive – as in all probability it will be, make sure to **hand in a police equity request at least a week before travelling to Hungary.**

When preparing the police equity request, you will need to be able to give the date of entry and the border station you will be using to enter Hungary.

A step by step guide on how to fill in and submit a Police Equity Form is available [here](#).





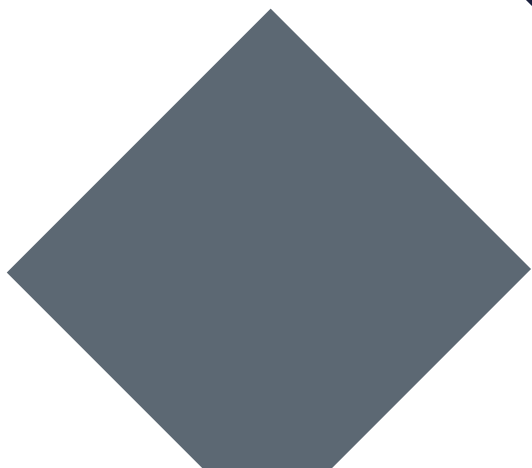
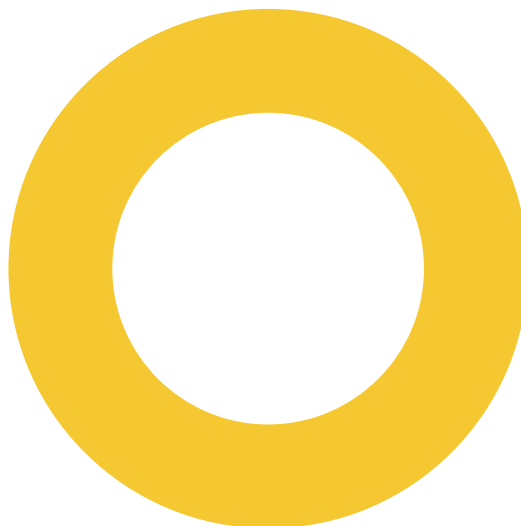
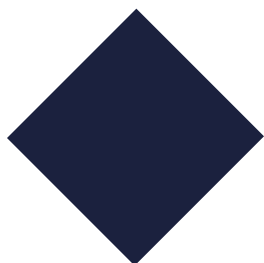
Things to be taken care of after arriving in Budapest

We will provide you with detailed information (in a similar booklet) on the tasks and duties you will have to deal with after arriving to Hungary.

However it might be useful to have a brief summary on what should you do once you arrive.

Students are requested to arrive to Budapest before the Orientation Week. Due to the pandemic, you may need to stay in quarantine. While we will do our best to inform you of any changes in the regulations, currently, you should calculate a 10 day quarantine period into the planned date of your arrival. Please also remember to check the up-to-date [Covid-19 information](#) before your arrival.

- ▶ Registration at Corvinus (exact dates will be provided in due time)
- ▶ Picking up your residence permit from (3rd country nationals) or registering (EU/EEA citizens) with the NDGAP (National Directorate General for Alien Policing) (precise information on this will be provided during the Orientation Session).
- ▶ Taking part in the Orientation Day – this is when you will be filling in your official Enrollment Form and picking up your temporary Student ID “card”.
- ▶ Official certificate of enrolment (required for picking up your residence permit or registering your stay in Hungary) can be issued only after you have officially enrolled at Corvinus.



Covid-19 Information

As the Coronavirus epidemic situation is changing rapidly, we highly recommend that you visit the official websites for valid and up to date information.

The following sources will provide you data on the spread of the Coronavirus, on the current vaccination level and on the safety measures in effect:

[The Hungarian Government's Coronavirus information](#)

[The Hungarian Government's social media platform on Coronavirus](#)

At the sites given below you will find information on how the epidemic may affect your studies and study administration at the University:

[Corvinus University's Coronavirus measurements and restrictions](#)

[Study administration during the epidemic](#)

If you feel you have [symptoms of the COVID-19](#):

- ▶ Call 104 (+36 104) – Ambulance
- ▶ Be ready to go to hospital (have your health card or private insurance with you)
- ▶ If you have an ESN tandem partner, inform him/her

Notify us: corvinus.studyabroad@uni-corvinus.hu and koronavirusinfo@uni-corvinus.hu



Campus Information

The Corvinus University has two Campuses, one in Budapest and one in Székesfehérvár (about an hour from Budapest by car or train). As incoming visiting student, you will study at the Budapest campus, this is what we will introduce below.

You can find more detailed information about the Campuses on the University's [website](#).

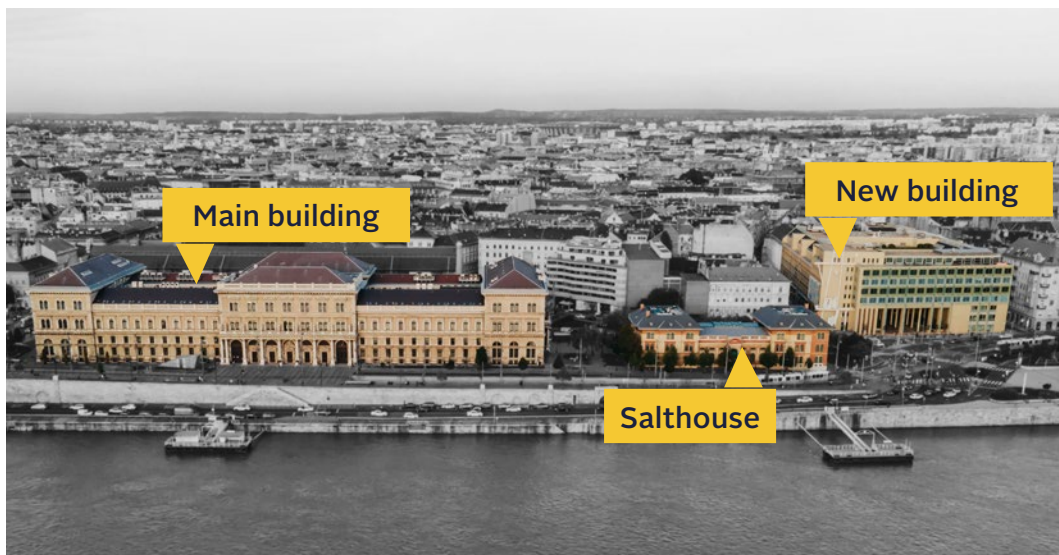
Feel free to check out our Campus Tour [video](#), too, to see the neighbourhood and the buildings of the Corvinus University while learning some interesting facts.

BUILDINGS OF THE BUDAPEST CAMPUS

Building E = Main building: [1093 Budapest, Fővám tér 8.](#)

Building S = Salthouse: [1093 Budapest, Fővám tér 13-15.](#)

Building C = New building: [1093 Budapest, Közraktár u. 4-6.](#)



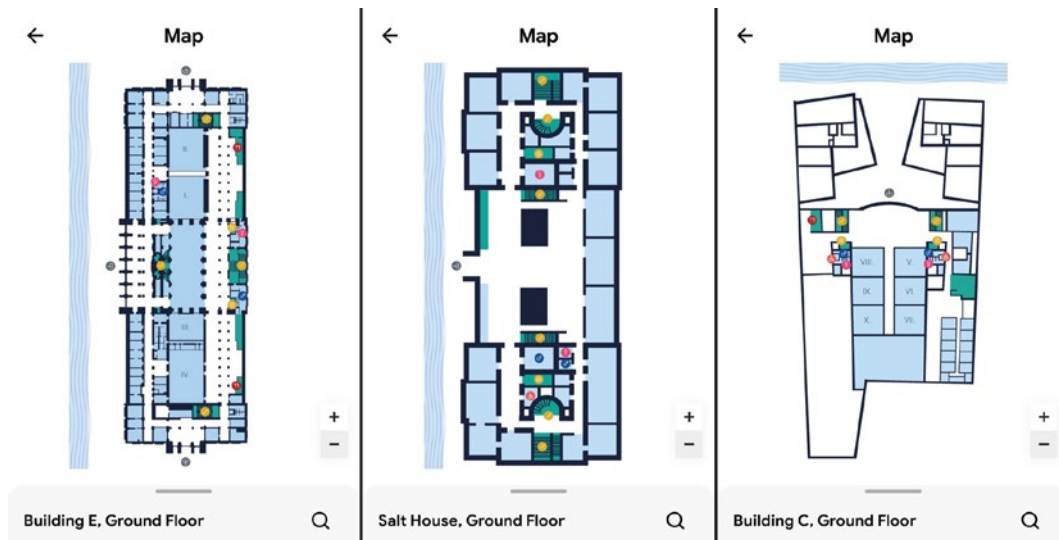
You can take a virtual tour of each building by checking the videos below:

[Building E](#)

[Building S](#)

[Building C](#)

The map of the buildings is accessible in the MyCorvinus app, where you can also search for the location of a specific classroom or office.



If you haven't downloaded the MyCorvinus app yet, you can do it from [AppStore](#) and [Google Play](#).

CAFETERIA

You can find two buffets in the student lounge of the main building (E.) and there is a buffet on the ground floor of the new building (C.).

Please note, that the opening hours of these facilities may vary due to the Coronavirus situation.

You will also find many small, reasonably priced restaurants around the university neighborhood.

COPY SHOP

You can find a copy shop on the ground floor of the main building opposite the Aula (Main Hall).

Opening hours: Mon-Thu: 08.00-16.30, Fri: 09.00-14.00, Sat-Sun: closed.

Please note, that the opening hours may vary due to the Coronavirus situation.

Preliminary course registration

21

The preliminary course registration will from **May 25 (10:00) to May 27 (23:59 h)**. (Click [here](#) for time converter)

You will receive your Neptun login details approximately one week before the preliminary course registration is opened for you.

You will need to register for your subjects in the Neptun system. A detailed guide will be provided to you on how to register for subjects, courses, etc.

Please note that visiting students should not register for more than 30 credits, so please choose your courses wisely. Please make sure that you are following your home university's guidelines in terms of how many courses you are requested to register for, whether Hungarian for beginners is a mandatory course for you or not etc..

For practical reasons we suggest that you start your course registration in the order of importance.

If you are unable to register for a course during the preliminary course registration period, you will have another opportunity to do so during the add/drop period in August/September. At that time, you will also be able to hand in a request form for a course you would really need.

COURSE STRUCTURE

In Hungary the courses have either theoretical or practical sessions, or both. When registering for courses you should understand the differences in the course structure.

Please check our [Course Structure](#) explanation sheet for more information.



Class Schedule of Corvinus

Corvinus have a set class schedule and your courses can be scheduled for any time from Monday 8:00 to Friday 20:40 h. Your specific schedule depends on the courses you are registered for (you will be able to check your course schedule in Neptun after you have registered for the courses).

Class schedule

08:00-09:30

09:50-11:20

11:40-13:10

13:40-15:10

15:30-17:00

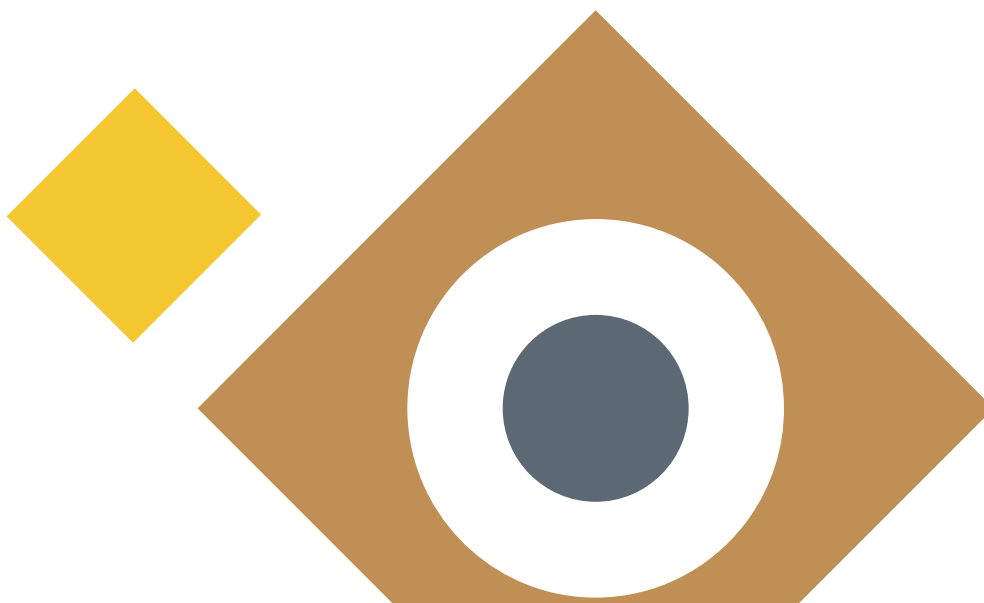
17:20-18:50

19:10-20:40



Fees and Payments

During your studies you may need to pay certain administrative fees or fulfil other financial obligations. Please read [this guide](#) for information on how to proceed.



Health Insurance



EU nationals – please arrange to have a valid European Health Insurance card. For detailed information on this, please check [here](#).

Non-EU nationals – please make sure to arrange for accident and health insurance for the duration of your stay in Hungary. Arranging for this in your home country will almost certainly be less expensive than arranging for it here in Hungary, moreover the services provided may be more comprehensive.

Important: you will not be able to arrange for health insurance at **Corvinus**, although we can, of course, provide you with the names of possible insurance providers.

CHRONIC ILLNESSES, REGULAR MEDICATION

Irrespective of your nationality: if you have any chronic illnesses or take medication regularly:

Make sure that your health insurance will cover any extra, related costs, if possible. Health care in Hungary can be quite expensive.

Bring with you your personal medication and arrange to have supplies sent to you regularly if you cannot bring a sufficient amount for the duration of your stay. For safety's sake, it's best to have with you a doctor's certificate (preferably in English) stating the types of medication you are taking and possibly your medical history.



Library

The library is located in building C. You can check the opening hours and facilities on the [library's website](#). The use of the library is free of charge, however, if you plan to loan out any books from the Library, you will have to register once you are here and your student status is active. Once you have registered and your Library card has been issued, you must pay a small, one-time fee of 1.000,-HUF (about 3,-EUR) for the library card via Neptun (this can be paid with a credit/debit card immediately via the SimplePay option). If you forget to pay, you will technically not be able to register for exams until you have settled the debt.

Student Organizations

The Corvinus University offers a very vibrant student life with many Student Organizations who are offering a great variety of programs. Some student groups are specialized in professional development, while others are there to organize social events. It is guaranteed that everybody will find an option which fully fits to his/her needs.

Feel free to have a look around at the University's [website](#) where you will find information about those Students Organizations who welcome international members and organize programs in English language, too.

The most popular student organizations among our international student are:

[ESN](#) – Erasmus Student Network

[Budapest Blend](#) – Student Organization operated by international students living in Budapest

[AIESEC](#) – The world's biggest international non-profit organization run by students

Student Council (HÖK)

HÖK is the Student Council whose main goal is to represent the student's interest. You can find out more about their operation and structure [here](#).

Sport and Health

25

You will find information on the sports options at Corvinus University [here](#).

Budapest offers numerous great possibilities for various sports. For more details check out some recommendations in the Life in Budapest section of this Booklet.

Student Support Services

Corvinus will assist you not only with your studies, but also in other aspects of life. Should you need help with your studies, if you face any psychological issues, please feel free to contact our Student Support office. You will find more information about their work [here](#) or on their [website](#).

- ▶ If you struggle with academic challenges
- ▶ If you feel concerned about university or personal matters
- ▶ If you have any special needs concerning your studies



Study Management

- ▶ Learning strategies
- ▶ Exam Stress
- ▶ Presentation anxiety
- ▶ Performance anxiety



Mental Health

- ▶ Intercultural issues
- ▶ Family and relationship conflicts
- ▶ Anxiety, stress
- ▶ Unexpected life events
- ▶ Loss, grief
- ▶ Identity questions
- ▶ Crisis



NapKözi

- ▶ Well-being projects
- ▶ Peer mentors
- ▶ Chill-out zone



Disability

- ▶ Support for students with special needs

Corvinus International Blog

Every international student at Corvinus is happy to get some “inside” information – which electives are the best, how the intensive week works, where to go within Hungary during holiday breaks and much more.

This is when the Corvinus International Blog steps in: get all the information in one place, written predominantly by your peers! Not only that, but anyone can write and publish content for CIB through a simple inquire on the platform. From the strictly academic to the absolutely laid-back topics, the blog provides essential information to all incoming internationals. From blogposts about Budapest apartment hunting to interviews with experienced professors and lecturers, you can receive significant help, just a few clicks away. Check out the blog [here](#).

Life in Budapest

Budapest is a stunning city in the heart of Europe which offers everything you could wish for. It has beautiful architecture, a rich history, a unique culture, a vibrant night life and fabulous gastronomy. Below you will find some sites that will help you prepare for your semester here, assist you in making the best of your stay and will also provide you some useful tips.

DISCOVER THE CITY

Before your journey you might want to check out some websites to get some inspiration on how to spend your time once you arrive in Budapest.

Websites to get inspired:

[Official website of Budapest](#) – News, tourist attractions, transportation, gastronomy, sport

[Budapest Travel Guide](#) – Tourism information portal of Budapest

[We love Budapest](#) – Possibly the best source to check what’s trending in the city. This site is popular among locals too

Videos to get inspired:

[2020 Image Video](#) – Budapest 365 – Spice of Europe

[Budapest from the sky](#) – Beautiful drone video

[Video about Hungarian inventions](#) – Learn about Hungarian inventions while enjoying the Budapest view and Hungarian music

COST OF LIVING

Approximate cost of subsistence

Approximately 100.000-150.000,-HUF/month based on your needs.

If you rent a room, you will need the same amount to live on plus the rent. Renting one room costs about 85.000-100.000,-HUF/month + utilities (25.000-30.000,-HUF). All in all, you will need about 210.000-280.000,-HUF/month, again based on your needs.

In the first month you will probably spend more money as you have to buy some basic things.

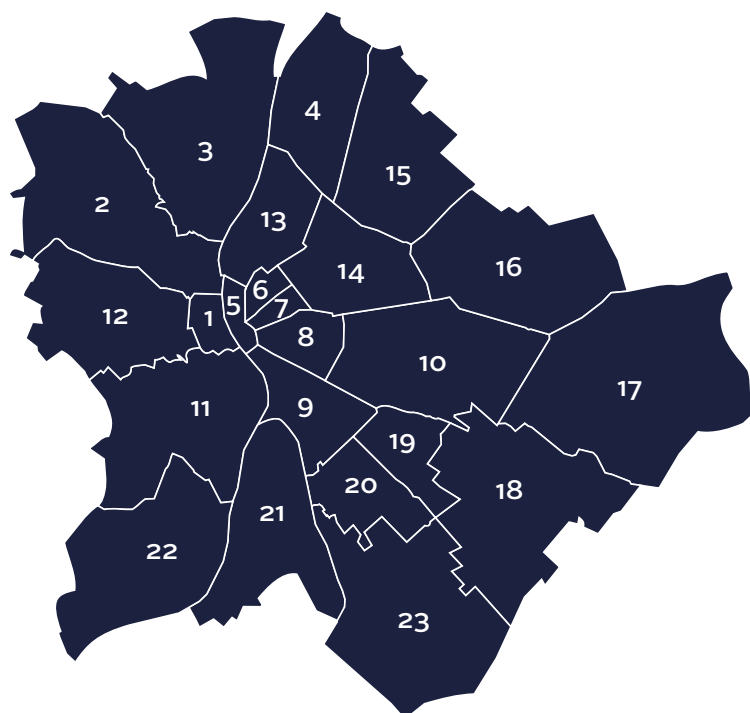
At the links below you can see some useful websites which help you calculating your costs:

[Numbeo – Cost of living in Budapest](#)

[Study in Hungary – Cost of living calculator](#)

DISTRICTS OF BUDAPEST

Budapest has 23 districts and the city is divided by the River Danube into Buda and Pest. Buda is hilly, Pest is rather flat and the city center is on the Pest side. Corvinus University is located at the edge of district 9 on the Pest side. The most central and most expensive districts are 5, 6, 7 and 9 and they are all on the Pest side. District 8 is also near the city center, but most parts of it can be dangerous, therefore please avoid this district if you can, except for Corvin-negyed which is at the border of district 8, and is considered safe.



PUBLIC TRANSPORT

Public transportation is very well-organized in Budapest. You can easily access your destination either with bus, tram, metro or suburban railway (HÉV) within the city, usually much faster than you would with a car. Night service is also provided.

[Official website of the Public Transport Company \(BKK\)](#)

[Trip planner \(BKK futár\)](#)

[Metro network Budapest](#)

[Public transport Maps](#)

[Official website of the Hungarian Railway](#)

Monthly Budapest pass for students:

You are entitled to use the public transportation in Budapest with a reduced price with a valid student ID (3450 HUF/month). Please be aware that you must have your temporary student ID with you at all times, as the student public transportation pass is only valid with the student ID card. The “on-site fine” is 16 000 HUF. If you do have a valid student ID, but simply forgot to take it along, do not pay on site, but rather choose to show your student ID card later at the designated BKK customer service office. In this case the fine will only be 2000 HUF.

If you have only a temporary Student ID card, please use your “[Oktatási azonosító](#)” on your monthly public transportation pass.

You can find more information [here](#).

Single trip transportation ticket:

If you live in the city center, you may not need the monthly transportation pass, but be careful as you mustn't travel on any public transport vehicle without a validated ticket. Blocks of 10 tickets can be bought at a slightly reduced price (single ticket price: 350 HUF, block of 10 tickets: 3000 HUF).

You can find more information [here](#).

ACCOMMODATION

Please note that if your accommodation arrangement is part of the Study Abroad agreement with your home university you will have received our Housing Offer from the Study Abroad coordinator. In that case for these students the below section is not applicable.

If finding and arranging your accommodation is your own responsibility the information below will serve as a useful guide. We highly suggest you do not to book your long-term accommodation from abroad, but rather spend a couple of nights in a hostel after your arrival and check your home for the coming months personally before booking it. There are some factors that you should consider when choosing your accommodation. Please check our detailed [Housing guide](#), before making the final decision.

For short-term accommodation you can check the following websites:

Hostels near Corvinus

[Hostel Budapest Center](#)

[Hello Budapest Hostel](#)

[Flow Hostel](#)

[Kálvin Ház](#)

[You can check the list of our suggested accommodations here.](#)

Booking pages

[Hostelworld](#)

[Budgetplaces](#)

Please note that the Corvinus University of Budapest is not and will not be liable for the content of the websites or any choice you may make.

USEFUL TIPS AND INFORMATION

Getting around in a new city is not always easy. With our brief [Practical Guide](#) we would like to give you some additional information on things what you might need to know during your stay such as the local emergency numbers, where to exchange money, or which taxi companies are the most reliable.



Discover Hungary

31

Budapest is truly amazing, but the countryside also has a great deal to offer. Hungary is full of beautiful historic places, amazing landscapes, and great cultural and gastronomic events.

Please find below some useful links to help you plan your trips outside Budapest.

Websites to get inspired:

[Visit Hungary](#) – Official tourism site of Hungary

[Excursions in Hungary](#) – Organized tours starting from Budapest

Videos to get inspired:

[Hungary, Wellspring of Wonders](#) – Official image film

[Hungary, World of Potentials](#) – Learn even more about Hungarian inventions while enjoying the rural view and Hungarian music

[Greater Budapest](#) – Check out what places are just a couple of hours away from the capital

Thank you for choosing Corvinus University!

We hope that this booklet will assist you in preparing for your studies at Corvinus and travel to Hungary. We also trust it has whetted your appetite to get to know this beautiful country.

We look forward to greeting you in Budapest in the coming Autumn semester! Stay „tuned” for more information a few weeks before your arrival.

STUDENT SERVICES
CORVINUS UNIVERSITY OF BUDAPEST

